

---

FOR THE UK MARKET ONLY  
IMPORTANT!

The wires in the mains lead supplied with this apparatus are coloured in accordance with the following code:

BLUE: NEUTRAL

BROWN: LIVE

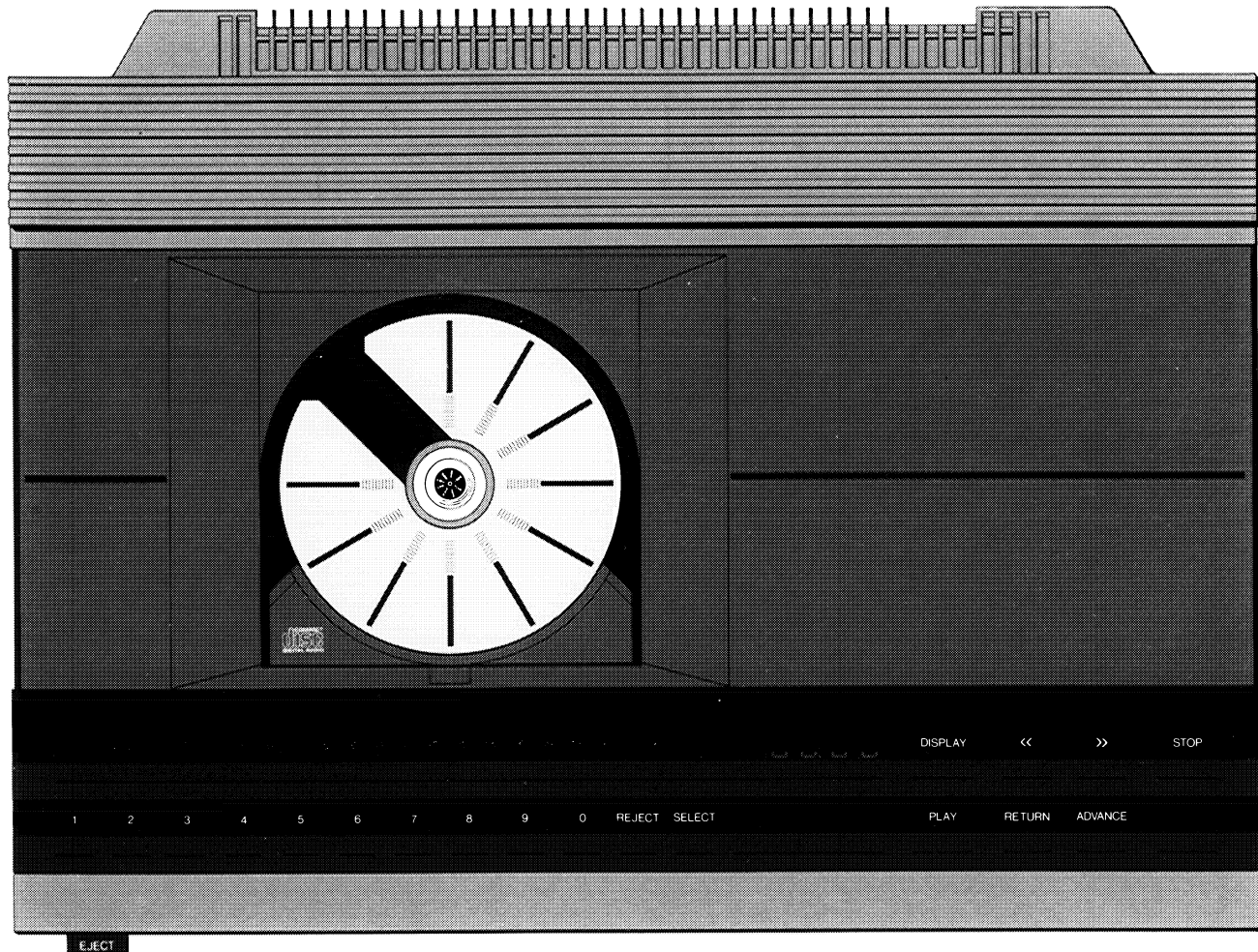
As the colours of the wires in the mains lead of this apparatus may not correspond with the coloured markings identifying the terminals in your plug proceed as follows:

- The wire which is coloured blue must be connected to the terminal which is marked with the letter N or coloured BLACK.
- The wire which is coloured brown must be connected to the terminal which is marked with the letter L or coloured RED.

Ensure that your equipment is connected correctly. If you are in any doubt, consult a qualified electrician.

# TABLE OF CONTENTS

- 3 SETTING UP
  - Adjustment to room temperature
  - Removing the transport screws
  - Where to put the compact disc player
  - Connection to receiver
  - Digital output
  - Stand-by mode
  
- 6 GAINING ACCESS TO THE DISC COMPARTMENT
  
- 7 PLAYING A COMPACT DISC
  
- 8 SPECIAL FUNCTIONS
  - Repeating a compact disc
  - Stepping through tracks
  - Searching through a compact disc
  - Programming a sequence of tracks
  - Cancelling a programmed sequence
  - Using the adding-time function
  
- 13 USING THE DISPLAY
  
- 14 MAINTENANCE
  
- 15 TECHNICAL SPECIFICATIONS



EJECT

1

2

3

4

5

6

7

8

9

0

REJECT SELECT

PLAY

RETURN

ADVANCE

DISPLAY

<<

>>

STOP

---

Beogram CDX 2 is designed to complement any audio system. It offers a variety of functions and outstanding sound reproduction.

You will find the sensi-touch operation easy and convenient to use. The traditional buttons have been replaced by a glass operating panel divided into sensi-touch areas. These are represented in this booklet by small boxes with the appropriate symbol or text inside them.

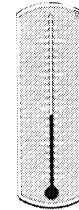
# SETTING UP

## Adjustment to room temperature

---

If the compact disc player has been exposed to low temperatures, e.g. during transport, and is then placed in a warm room, condensation can form within the mechanism. If this happens, it will not play until the humidity falls to an acceptable level.

Therefore, allow the compact disc player to acclimatize to normal room temperature for at least an hour or two before use.



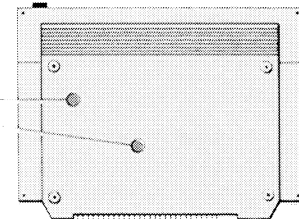
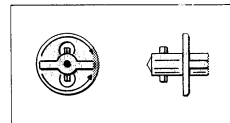
## Removing the transport screws

---

The Beogram is provided with two plastic screws on the base which protect the disc suspension during transport. These screws must be removed before you can operate it.

Carefully turn the compact disc player upside down to gain access to the screws. Remove the screws and keep them in a safe place.

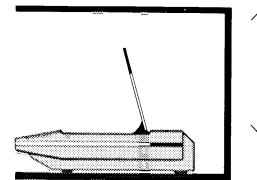
If you ever have to transport the compact disc player, we strongly recommend that you reinsert the transport screws.



## Where to put the compact disc player

The compact disc player must be placed horizontally on a stable surface. Make sure to put it in a place where ventilation cannot be impeded.

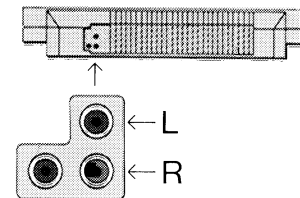
Leave a space of approximately 20 cm above the compact disc player so that the dust cover can open freely.



## Connection to receiver

The Beogram CDX 2 can be connected to any receiver via the phono sockets on the rear. If your receiver has phono sockets, connect the compact disc player to the receiver using the cable with phono plugs supplied with the compact disc player, L for left channel and R for right channel. It can be connected to either the TAPE input or the AUX input on the receiver.

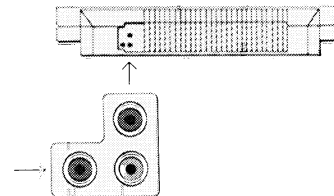
If your compact disc player is to be connected to a receiver with DIN sockets only, an adaptor must be inserted. The adaptor (part no. 6270304) is available from your Bang & Olufsen dealer.



## Digital output

---

The digital output on the rear panel is intended for possible future digital equipment.



## Stand-by mode

---

Once connected to the mains, the compact disc player is in stand-by mode and ready to be operated. The stand-by mode is indicated by a tiny red light on the right-hand side of the operation panel.

The compact disc player is designed to be left in stand-by when not in use.



---

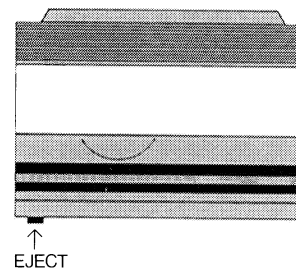
*Do not forget to remove the plastic film which protected the Beogram against fingerprints and dust before use.*

## GAINING ACCESS TO THE DISC COMPARTMENT

Press the button marked EJECT to open the dust cover. The disc tray will rise to a tilting position and a light will switch on.

*The compact disc must be placed on the tray with the printed side up.*

The cover will close when you start playing or if the compact disc player is switched to stand-by. If the cover is left open for more than 30 minutes, it will close automatically and the compact disc player will switch to stand-by.



---

*If the compact disc player is not connected to the mains, the dust cover will not open, when you press the EJECT button. However, the lock mechanism will be released so that you can open the cover manually.*



## PLAYING A COMPACT DISC

Place a compact disc on the tray and press **PLAY** to start playing.

The compact disc player will register all tracks contained on the compact disc, and the track numbers will light up in green. Track numbers above 19 are indicated by +.

Playing will begin at track 1.

If you want to listen to a specific track on the compact disc, press the appropriate number, e.g. **3**. The compact disc player will move to the track of your choice and start playing from there.

Press **STOP** to stop playing.

The compact disc will pause until you press **PLAY** again to resume playing. You can also stop playing by pressing **●** to switch directly to stand-by.

**PLAY**

**STOP**



---

Playing stops automatically at the end of the compact disc.

## SPECIAL FUNCTIONS

### Repeating a compact disc

---

You can instruct the compact disc player to repeat a compact disc up to four times.

If you press **PLAY** another time while playing a compact disc, 0 (zero) will be displayed indicating that the compact disc will not be repeated.

Press **PLAY** immediately again if you want the compact disc to be repeated once, or press it repeatedly until the appropriate figure appears on the display.

**PLAY**



If playing is stopped, any repeat order will be cancelled.

### Stepping through tracks

---

You can step forwards or backwards through the tracks on a compact disc.

Press **ADVANCE** the number of times required to step forwards to the track you want. If you press **ADVANCE** when the last track on the compact disc is being played, the compact disc player will start playing again from the first track.

Press **RETURN** once to step backwards to the start of the track you are listening to. Press **RETURN** twice or more to step backwards to the start of the preceding tracks. If you press **RETURN** twice when the first track on the compact disc is being played, the compact disc player will start playing the last track.

**ADVANCE**

**RETURN**

The track number you have stepped to by pressing **ADVANCE** or **RETURN** will appear immediately on the display.

If you press **RETURN** once immediately after loading the compact disc, the compact disc player will play the first track on the disc as indicated by 1.

If you continue pressing **RETURN** before all the tracks on the compact disc have been registered, 1 .-, 2 .-, 3 .-, etc., will appear indicating that the last, the second last, the third last, etc., track will be played. When all the tracks have been registered, the correct track number will appear on the display.



## Searching through a compact disc

---

The **<<** and **>>** controls enable you to move through a compact disc if you want to find a specific point on the disc.

Keep your finger on **<<** or **>>**. Within a few seconds the search speed will accelerate. Lift your finger to stop searching.

Tap **<<** or **>>** repeatedly to slow down the search speed.



Press **PLAY** to start playing.

PLAY

## Programming a sequence of tracks

---

You can program the compact disc player to play specific tracks in any sequence you require.

Press **[STOP]** if you don't want the compact disc to be played while you are programming.

You can include up to 24 tracks in one sequence. The tracks will be played in the order you have programmed them, for instance 2 > 4 > 3 > 6 > 5 etc. You could, if you wished, program the same track 24 times. If you select a track number which does not exist (as indicated by the symbol ?), the compact disc player will simply disregard your instruction.

1. Press **[SELECT]**.

The cue ORDER will light up next to the green number display.

2. Key in the track number of your choice while ORDER is displayed.

The track you have selected will now light up on the green number display.

3. Repeat steps 1 and 2 to program other track numbers.

4. Press **[PLAY]** to play the sequence of tracks you have programmed.

You can also program a sequence of tracks by using **[REJECT]** instead of **[SELECT]**. This means that you instruct the compact disc player to ignore the track numbers you do *not* want to hear.

Whenever you use **[REJECT]** to exclude one or more tracks while playing a compact disc, the remaining numbers displayed will be considered a programmed sequence. As soon as the current track ends, the compact disc player will start playing the sequence from the beginning and in strict numerical order.



REJECT

SELECT

Once you have initiated a programmed sequence by pressing **SELECT** or **REJECT**, the compact disc player will include or exclude, as the case may be, all tracks for which it receives no instruction.

## Cancelling a programmed sequence

---

If you want to cancel a programmed sequence, keep **REJECT** depressed for about two seconds.

Opening the disc compartment will cancel all information about tracks the compact disc player has previously registered.

**REJECT**

## Using the adding-time function

---

The adding-time function can be used in conjunction with the programming function. It enables you to compile tracks so that the total playing time of the programmed sequence adds up to a certain number of minutes (max. 99 minutes), e.g. the time available on the tape you are going to record on.\*

### *Please note!*

While using the adding-time function do not use any other functions, e.g.  $\ll$  or  $\gg$ , or you will cancel everything you have just programmed.

1. Press **STOP** for about two seconds.

The compact disc player will return to the first track where it will pause.

2. Press **DISPLAY** until the total playing time of the compact disc is displayed.

Any programmed sequence entered previously will be cancelled.

3. Press **SELECT** or **REJECT** and then key in the track number you want to include or exclude from the programme.

The new total playing time will be displayed, i.e. the playing time of the one track you have includ-

ed in the programme, or the playing time of the entire compact disc reduced by the playing time of the one track you have excluded from the programme.

4. Repeat step 3 to select or reject other tracks.

Every time you select or reject tracks, the new total playing time will be displayed. You can keep selecting and rejecting tracks until you get as close as possible to the total playing time desired, or until you have programmed 24 tracks.

5. Press **PLAY** to play the programmed sequence.

---

The adding-time function is not applicable to compact discs with more than 20 tracks.

# USING THE DISPLAY

The display will give you information about where you are on the disc. It can be set to give three different types of information:

- track and index number of the current track, e.g. 3 . 1 for track number 3, index 1.
- elapsed time, e.g. 1.15 indicating that the current track has been playing for 1 minute and 15 seconds.
- remaining time, always indicated by four digits, e.g. 05.25 meaning that there are 5 minutes and 25 seconds of playing time left on the disc.

Press **[DISPLAY]** to see each set of information.

## *Please note!*

If you have programmed a sequence of tracks without using the adding-time function, the display can give you two sets of information only, i.e. track and index number and elapsed time for the current track.



The display can give you information about the total number of tracks and the total playing time of the compact disc, *before* you start playing it.

After placing the compact disc on the tray press **[STOP]**. Keep your finger on **[STOP]** for about two seconds. The compact disc will start rotating and the display will give you the total number of tracks and the total playing time.

Press **[DISPLAY]** to see each set of information.

The symbol ? will appear if the compact disc player cannot understand your instructions or cannot carry them out.



## MAINTENANCE

Use a dry, soft cloth to wipe dust off the Beogram. Window cleaner on a dry cloth will remove any fingerprints and grease stains. Any dust in the disc compartment should be carefully removed. Do not push down on the disc tray.

*Never use denatured alcohol to clean any parts of the Beogram.*

---

CAUTION: Use of any controls, adjustments or procedures other than those specified herein may result in hazardous radiation exposure.

The black and yellow label on the compact disc player serves as a warning that the apparatus contains a laser system and is classified as a class 1 laser product. In case of any trouble with the compact disc player, please contact your Bang & Olufsen dealer. The apparatus must be opened by qualified servicemen only.

**COMPACT**  
**disc**  
**DIGITAL AUDIO**

**CLASS 1**  
**LASER PRODUCT**



# TECHNICAL SPECIFICATIONS

<b>Beogram CDX 2</b>	
<b>Type no.</b>	<b>5161/5162/5164</b>
Frequency range	3-20,000 Hz $\pm$ 0.3dB
Signal-to-noise ratio	> 96 dB/100 dB A-weighted
Dynamic range	> 96 dB
Harmonic distortion	< 0.003% at 0 dB < 0.03% at -20 dB
Channel separation	> 94 dB
Channel difference	< 0.5 dB
Converter system	2 x 16 bit, 4 x oversampling 176.4 kHz
Low pass filter	Digital + Bessel analog
Damping above 20,000 Hz	> 50 dB
Phase error between L and R	0 degree at 20-20,000 Hz
Output, analog	2 volts RMS at 0 dB
Output, digital	For digital equipment
Power supply	5161: 220 (240) volts 5162: 240 (220) volts 5164: 100 volts
Power frequency	50-60 Hz
Power consumption	30 watts
Dimensions W x H X D	42 x 7.5 x 31 cm
Weight	4.9 kg
<b>Subject to change without notice</b>	

This Beogram fulfils the conditions stated in the EEC Directive 82/499 concerning radio frequency interference.

## International guarantee

---

This Bang & Olufsen product carries a guarantee against defects in workmanship and materials. It is a national guarantee, extended by Bang & Olufsen to the country in which the product was bought. The terms of the guarantee apply principally to the country of purchase but will be met by authorized Bang & Olufsen dealers in other countries. The guarantee period applying to the country of purchase takes priority over guarantee periods applying in other countries, even where differences exist.

In order to obtain service under this guarantee from a dealer in a country other than that in which the product was bought, the guarantee form must be completed in full and presented to the dealer.

Bang & Olufsen  
DK-7600 Struer  
DENMARK